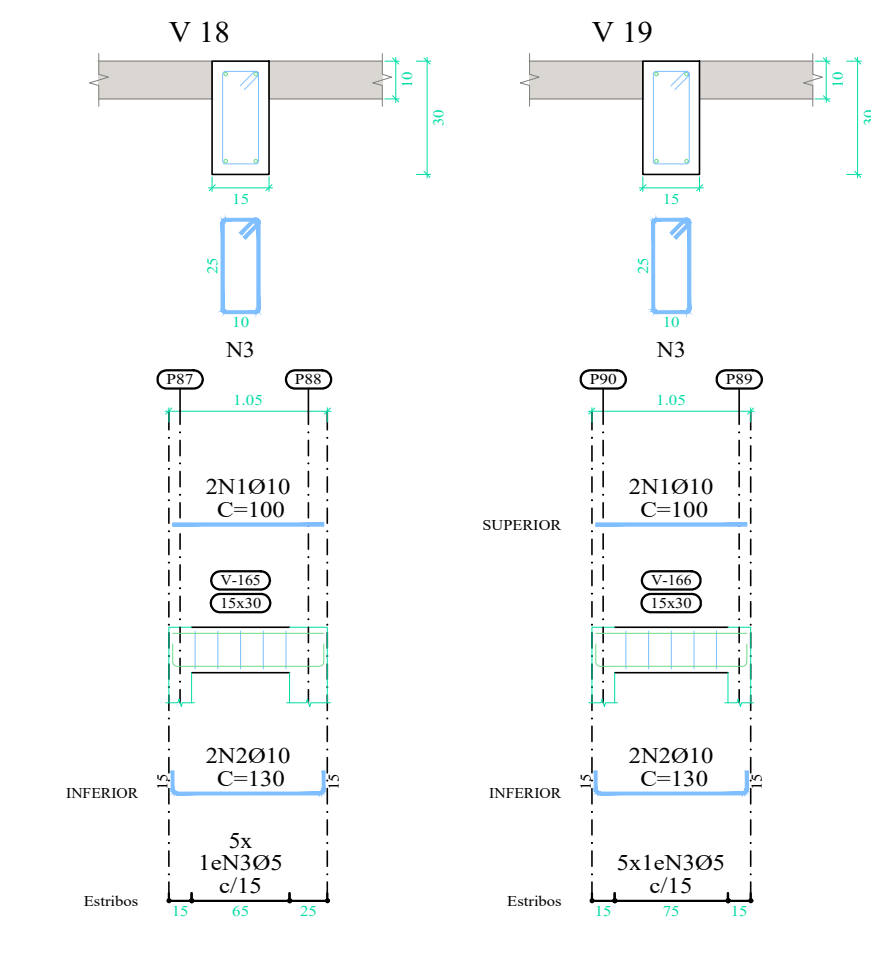
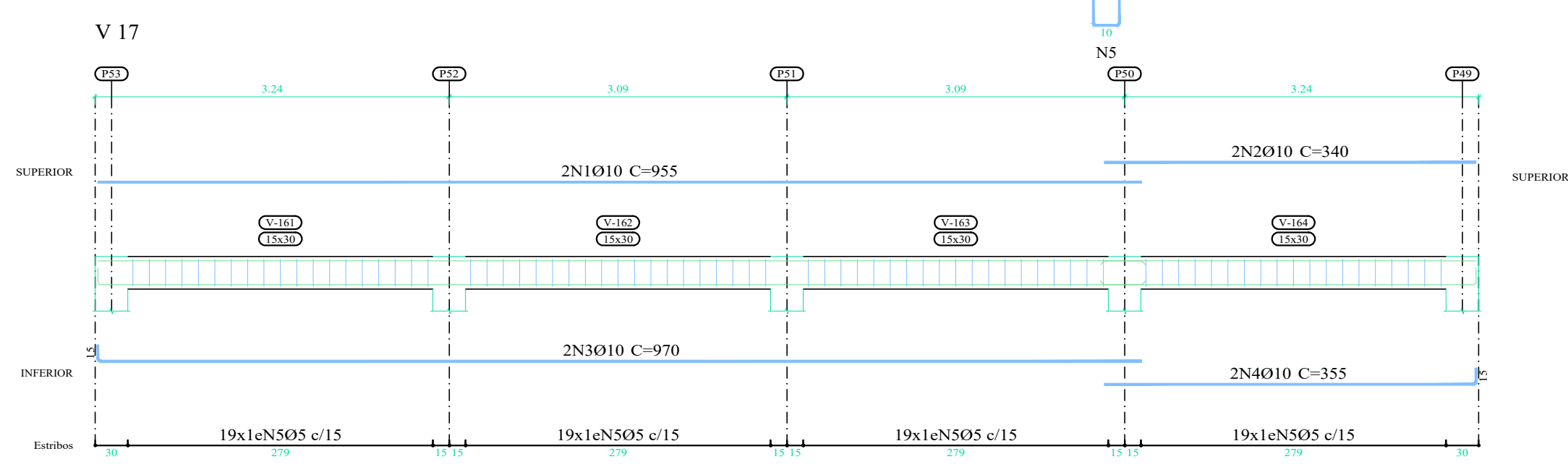
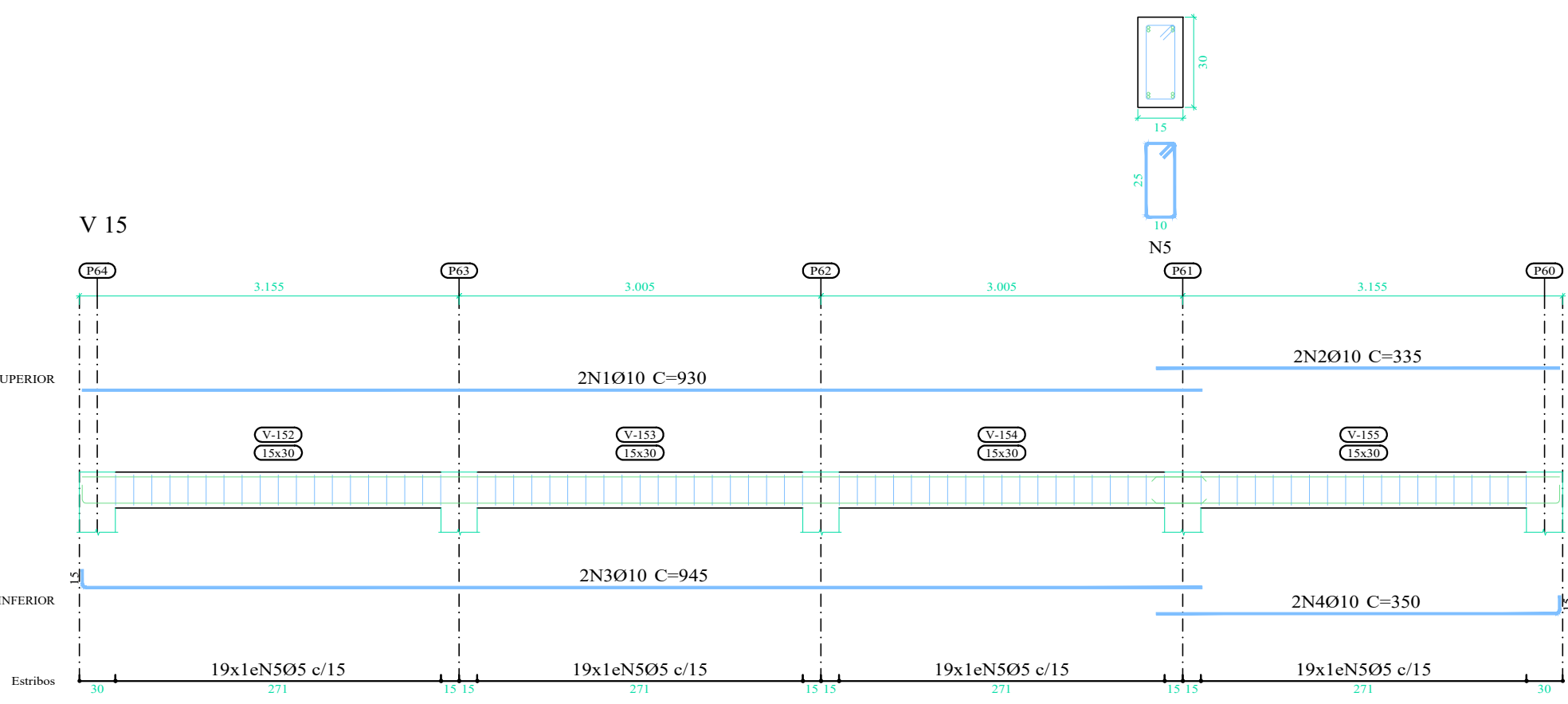
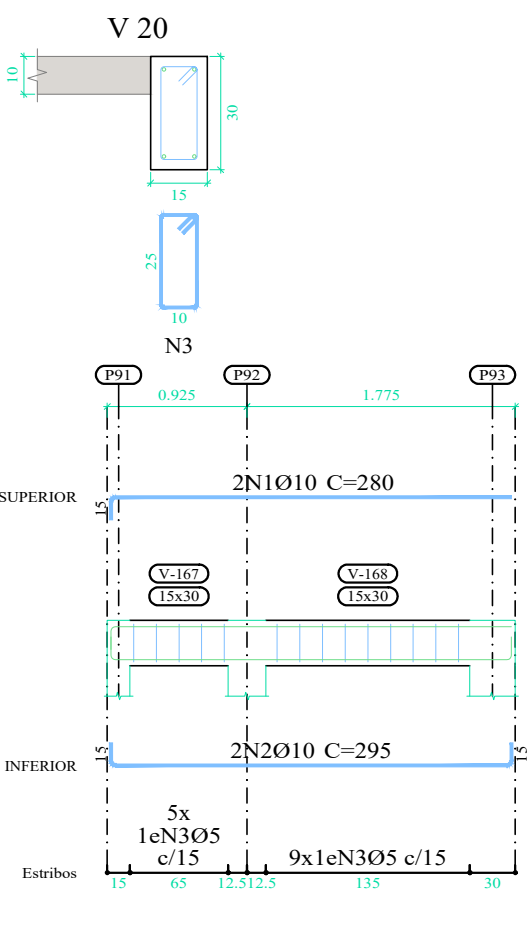
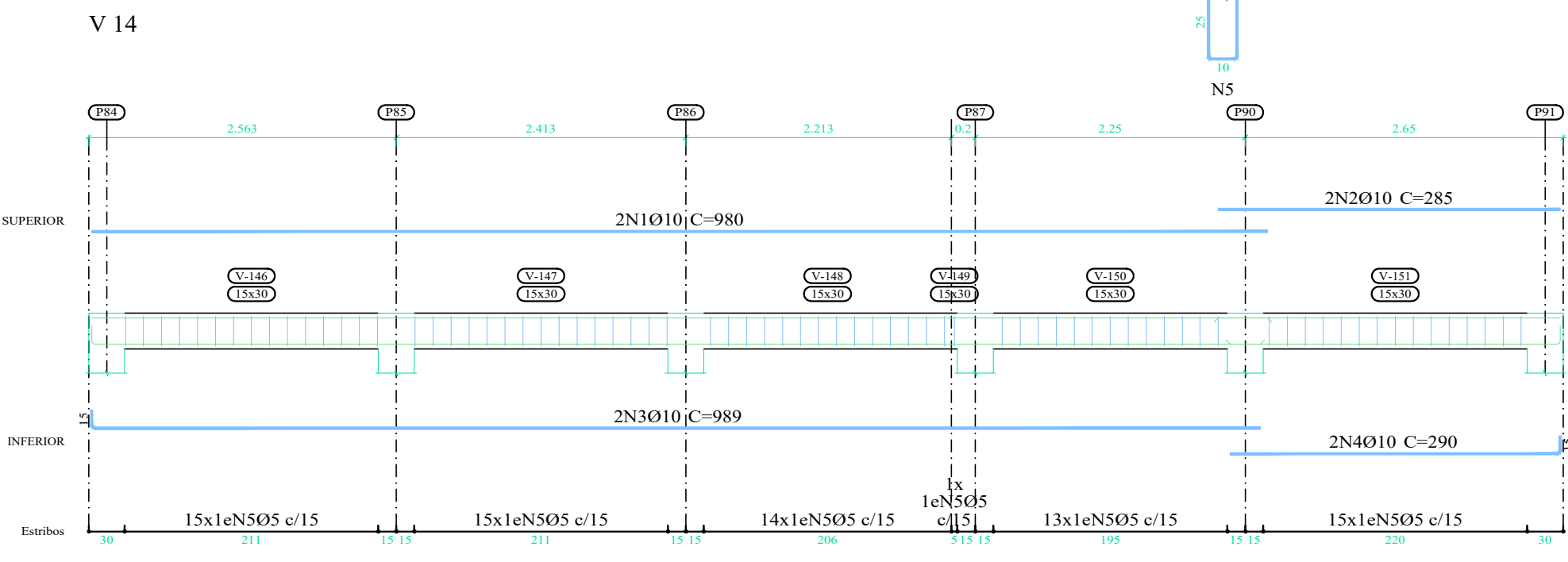
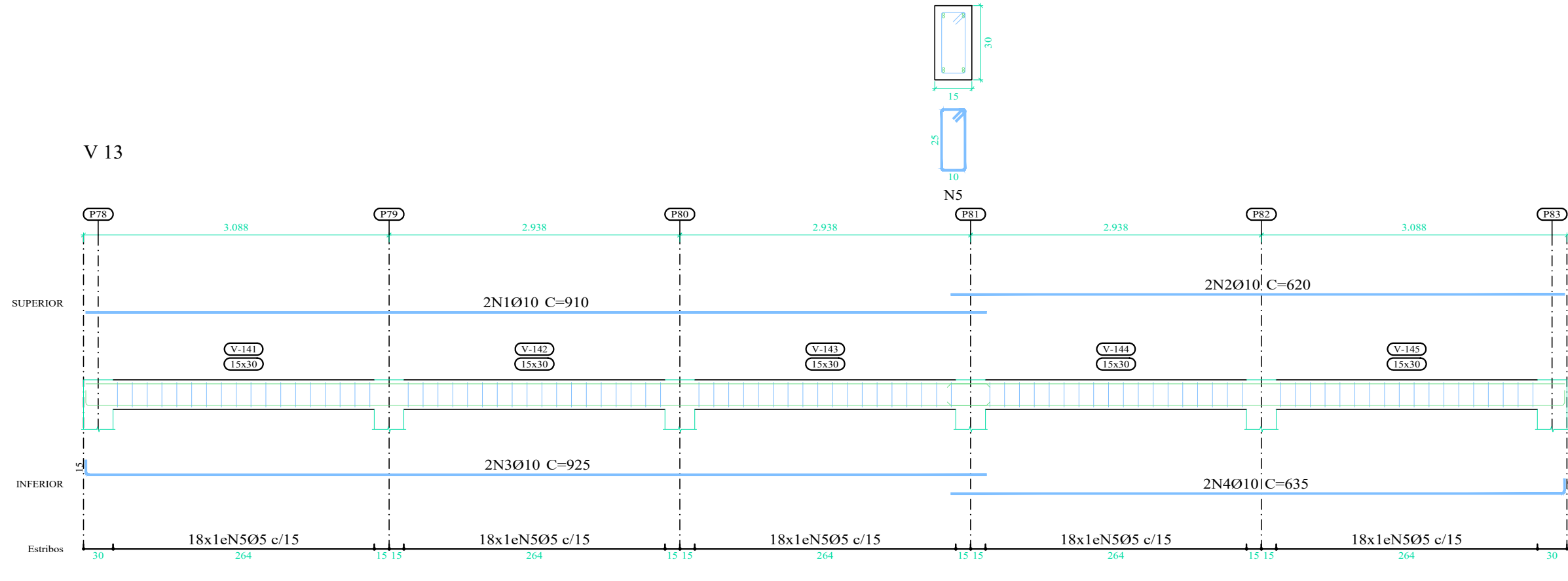
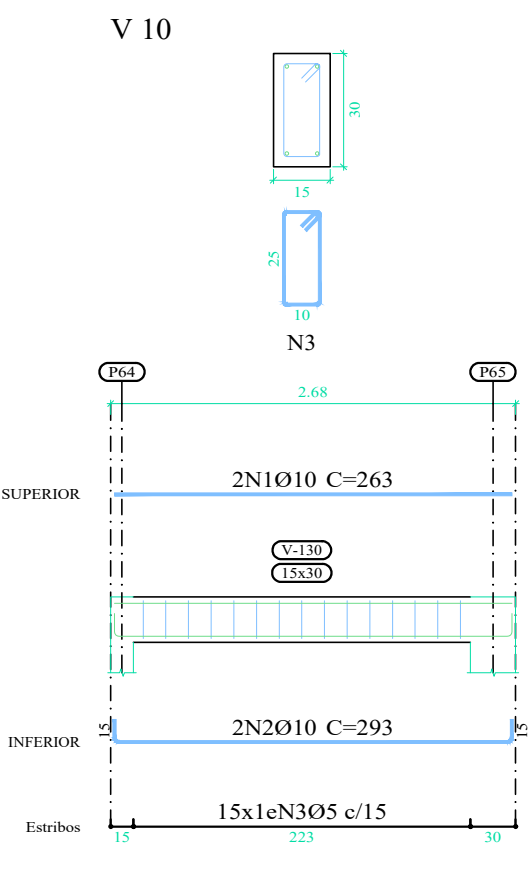
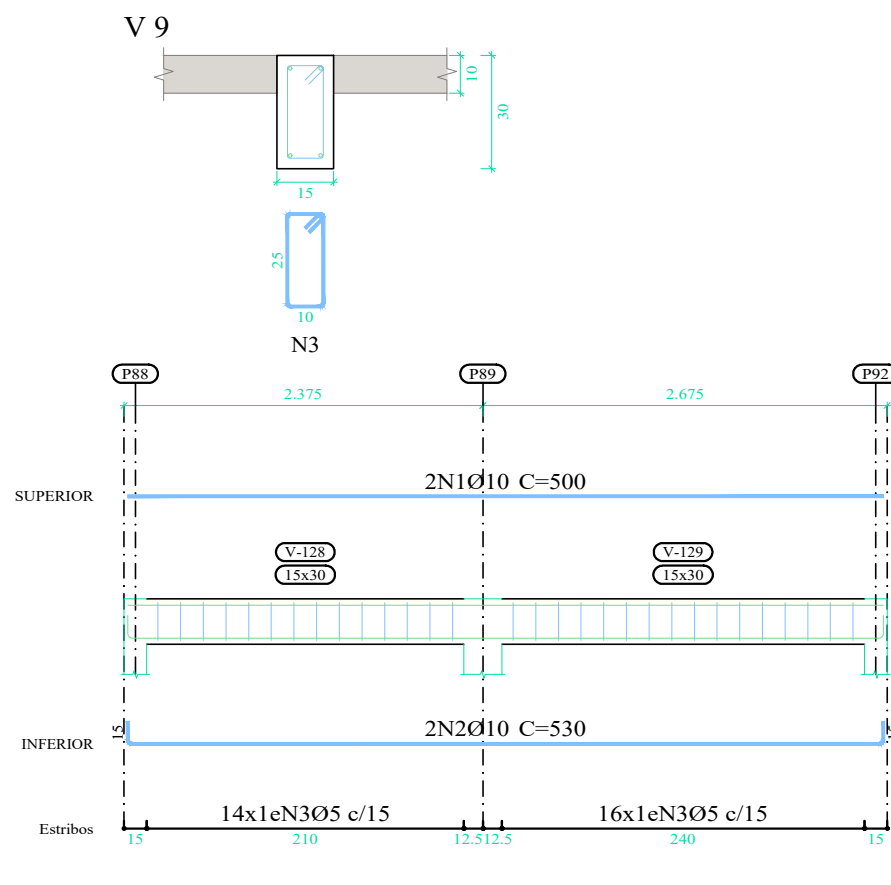
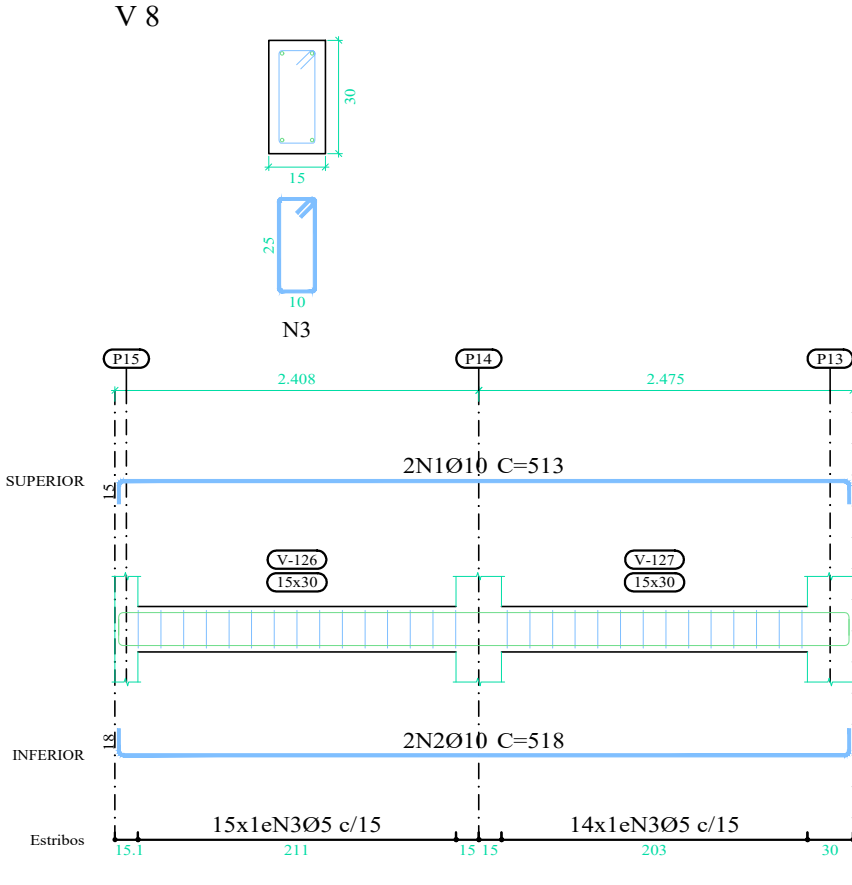
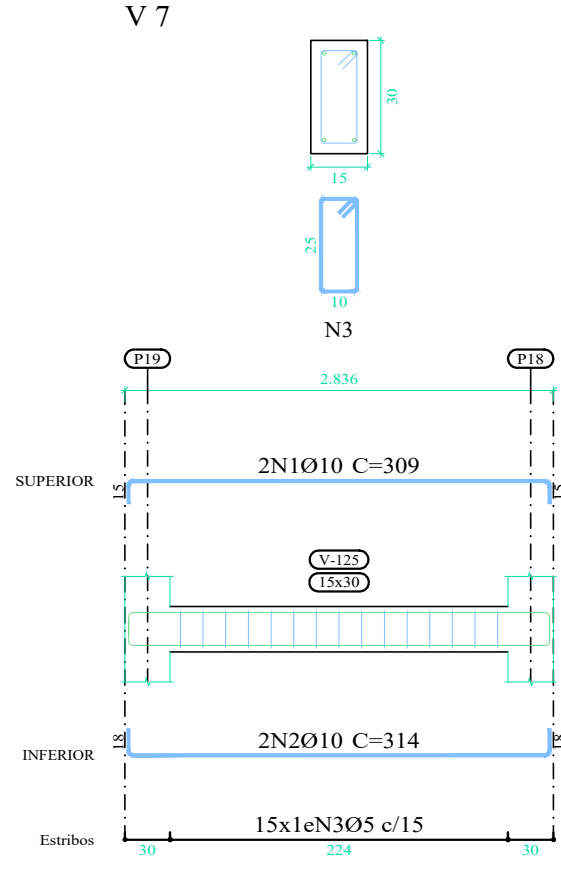
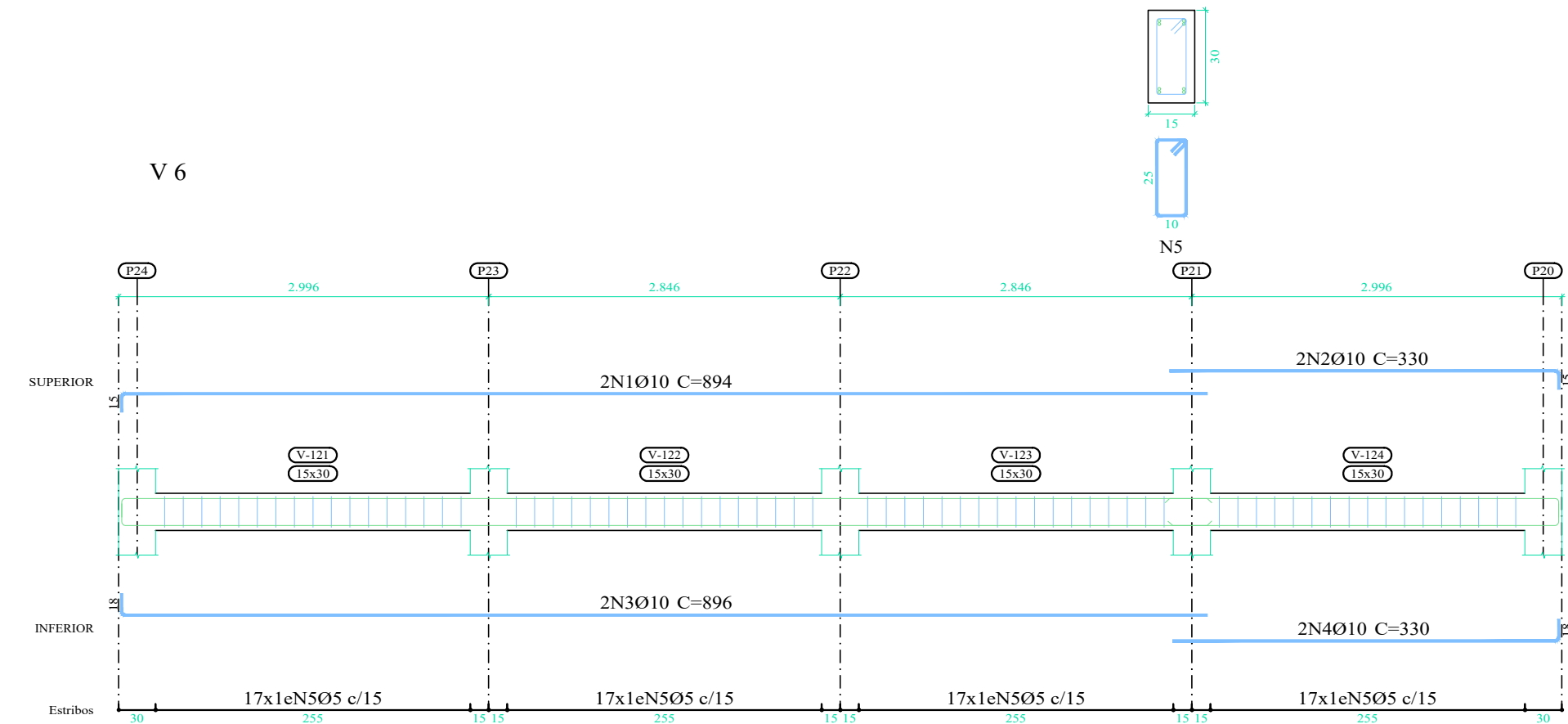
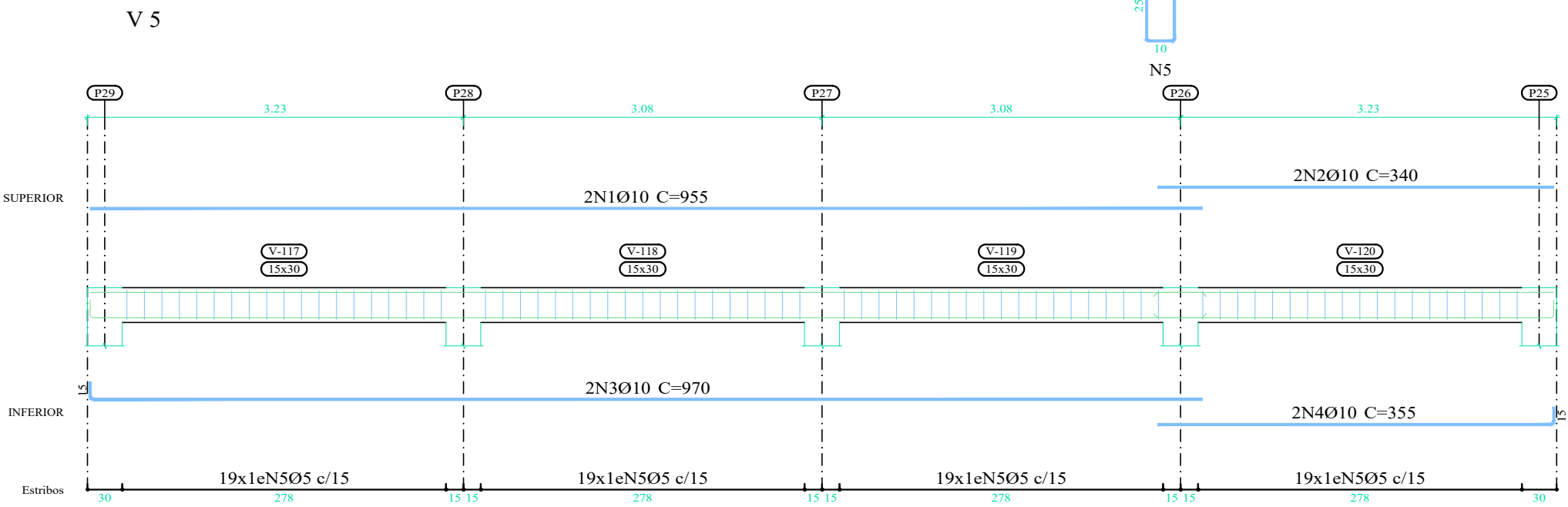
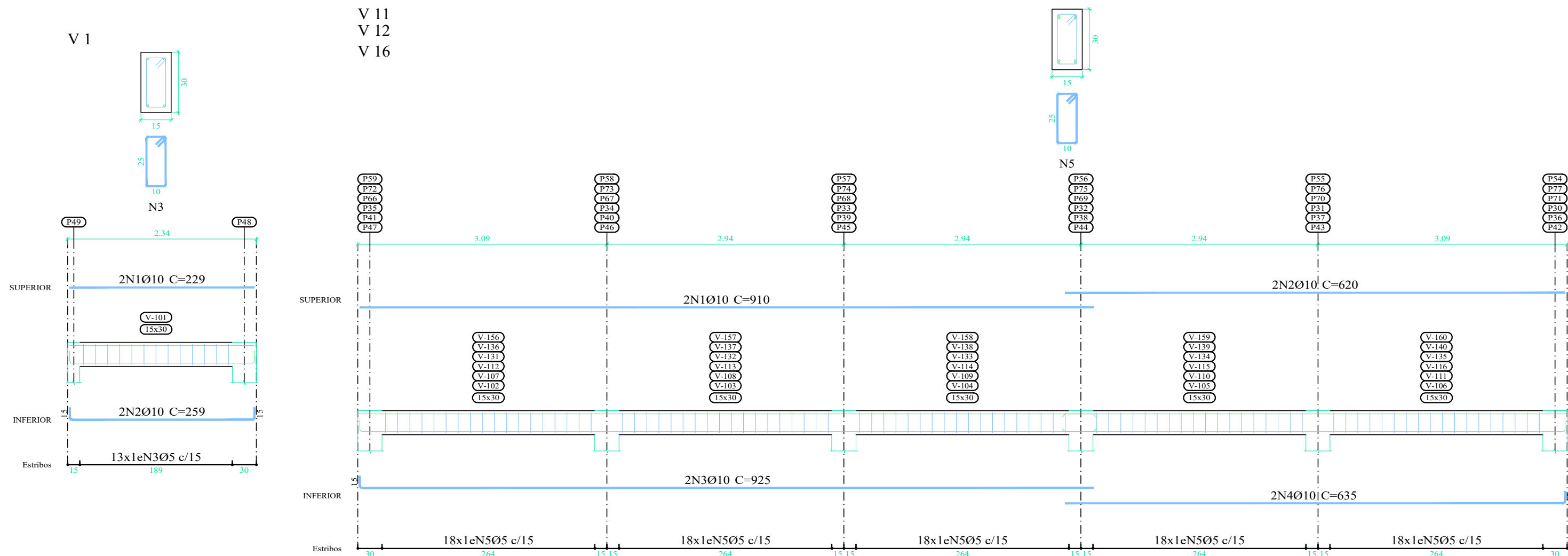


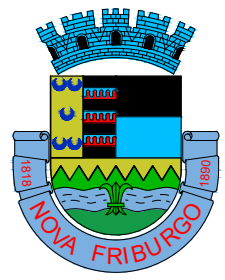
VIGA 06

V 2  
V 3  
V 4  
V 11  
V 12  
V 16



1º Nível Superior  
Desenho de vigas  
Concreto: C25, em geral  
Aço das barras: CA-50 e CA-60  
Escala vigas 1:50  
Escala seções 1:20  
Escala aberturas 1:20

Elemento	Pos.	Diam.	Q.	Esquema (cm)	Comp. (cm)	Total (cm)	CA-50 (kg)	CA-60 (kg)
V 1	1	Ø10	2	229	229	458	2.8	
	2	Ø10	2	229	259	518	3.2	
	3	Ø5	13	10	78	1014		1.6
							Total:	6.0
V 2=V 3=V 4=V 11 V 12=V 16	1	Ø10	2	910	910	1820	11.2	
	2	Ø10	2	620	620	1240	7.6	
	3	Ø10	2	910	925	1850	11.4	
	4	Ø10	2	620	635	1270	7.8	
	5	Ø5	90	10	78	7020		11.0
							Total:	38.0
V 5	1	Ø10	2	955	955	1910	11.8	
	2	Ø10	2	340	340	680	4.2	
	3	Ø10	2	955	970	1940	12.0	
	4	Ø10	2	340	355	710	4.4	
	5	Ø5	76	10	78	5928		9.3
							Total:	32.4
V 6	1	Ø10	2	879	894	1788	11.0	
	2	Ø10	2	330	330	660	4.1	
	3	Ø10	2	879	896	1792	11.0	
	4	Ø10	2	330	330	660	4.1	
	5	Ø5	68	10	78	5304		8.3
							Total:	30.2
V 7	1	Ø10	2	279	309	618	3.8	
	2	Ø10	2	279	314	628	3.9	
	3	Ø5	15	10	78	1170		1.8
							Total:	7.7
V 8	1	Ø10	2	483	513	1026	6.3	
	2	Ø10	2	483	518	1036	6.4	
	3	Ø5	29	10	78	2262		3.6
							Total:	12.7
V 9	1	Ø10	2	500	500	1000	6.2	
	2	Ø10	2	500	530	1060	6.5	
	3	Ø5	30	10	78	2340		3.7
							Total:	12.7
V 10	1	Ø10	2	263	263	526	3.2	
	2	Ø10	2	263	293	586	3.6	
	3	Ø5	15	10	78	1170		1.8
							Total:	6.8
V 13	1	Ø10	2	910	910	1820	11.2	
	2	Ø10	2	620	620	1240	7.6	
	3	Ø10	2	910	925	1850	11.4	
	4	Ø10	2	620	635	1270	7.8	
	5	Ø5	90	10	78	7020		11.0
							Total:	38.0
V 14	1	Ø10	2	980	980	1960	12.1	
	2	Ø10	2	285	285	570	3.5	
	3	Ø10	2	980	989	1978	12.2	
	4	Ø10	2	275	290	580	3.6	
	5	Ø5	73	10	78	5694		8.9
							Total:	31.4
V 15	1	Ø10	2	930	930	1860	11.5	
	2	Ø10	2	335	335	670	4.1	
	3	Ø10	2	930	945	1890	11.6	
	4	Ø10	2	335	350	700	4.3	
	5	Ø5	76	10	78	5928		9.3
							Total:	31.5
V 17	1	Ø10	2	955	955	1910	11.8	
	2	Ø10	2	340	340	680	4.2	
	3	Ø10	2	955	970	1940	12.0	
	4	Ø10	2	340	355	710	4.4	
	5	Ø5	76	10	78	5928		9.3
							Total:	32.4
V 18	1	Ø10	2	100	100	200	1.2	
	2	Ø10	2	100	130	260	1.6	
	3	Ø5	5	10	78	390		0.6
							Total:	2.8
V 19	1	Ø10	2	100	100	200	1.2	
	2	Ø10	2	100	130	260	1.6	
	3	Ø5	5	10	78	390		0.6
							Total:	2.8
V 20	1	Ø10	2	265	280	560	3.5	
	2	Ø10	2	265	295	590	3.6	
	3	Ø5	14	10	78	1092		1.7
							Total:	7.1
							Ø5:	0.0
							Ø10:	137.5
							Total:	0.0
							Total:	137.5



NOVA FRIBURGO  
PREFEITURA  
SECRETARIA DE INFRAESTRUTURA E OBRAS

CONSTRUÇÃO DO CMEI - VEREADOR IRINEU MINEIRO

Nº DO PROCESSO

ASSUNTO: PROJETO BÁSICO ESTRUTURAL DOS MUROS DE DIVISA

SECRETÁRIO DE OBRAS

BERNARDO COELHO VERLY - MATRÍCULA : 62.009

SUBSECRETÁRIO DE PROJETOS E RESPONSÁVEL TÉCNICO

LUAN LEITE FELJO - ENG. CIVIL - CREA - RJ : 2013102356 - MATRÍCULA : 115.288

ENDEREÇO: RUA EUGENIO NIDICK, LOTE 02, NUMERO COLONIAL 11, CATARÇON, NOVA FRIBURGO - RJ

VIGAS DO 1º NÍVEL SUPERIOR, NÍVEL = 2,20m.

CONSTRUÇÃO :

ESCALA : INDICADA

DATA : FEVEREIRO / 2025

PRANCHA : 01/02

Nota de projeto: